

INTRODUCING THE
HAVEN



HOMES DESIGNED FOR AUSTRALIAN LIVING



SELECTA
HOMES & BUILDING SOLUTIONS

INTRODUCING THE

HAVEN

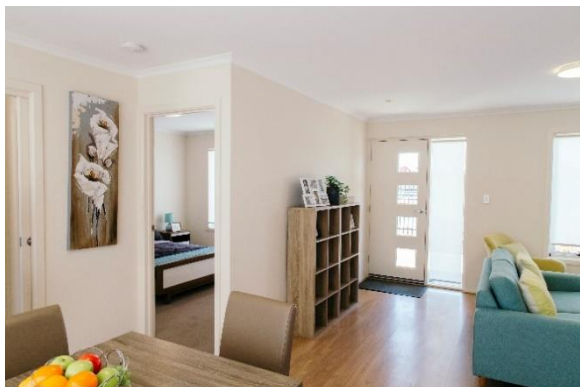
It is easy to see why our Haven design has prompted us to label it as part of our new 'Retreat Collection' of buildings designed as a dependent accommodation for your loved ones or guests. You will be surprised when you enter the Haven as to how spacious it is. With a large open plan living, dining and kitchen area, large bedroom and two-way bathroom, there is not only room for a couple, but guests as well. If it is a teenage retreat you are after, they will be the envy of all their friends and sure to provide the privacy your growing teenagers need during their important study years. With a high level of finishes throughout and plenty of space, you won't believe you are not in a full-sized home.

STANDARD HOME PRICE:

\$122,950

Above Standard Features:

- Hip roofline
- Scyon Stria cladding & rendered walls
- Portico to front (including timber deck)
- Sorrento feature front door
- Sorrento interior doors
- Estate lever door furniture
- Combination light / exhaust fan / heat lamp fitting to bathroom
- LED downlights (5 total)
- Full width mirror above vanity
- 1200 high tiling to bathroom
- Vinyl faced built in robe to bedroom
- Floor coverings
- Split system r/cycle a/c
- Window furnishings (roller blinds)



AS DISPLAYED
(incl. Above Standard Features)

\$150,336

Overall dimension:
59m² | 8.8w x 6.7d
(excludes concrete slab & footings)

Price effective 20/08/2024